

YOUR DREAMFORCE GUIDE TO

GETTING AROUND SAN FRANCISCO FASTER

With limited time, so many options, and so much to do while at Dreamforce, getting to each destination as quickly as possible is key. "Velocify" your way through San Francisco with this quick-reference guide. We've compiled popular modes of transportation and found the 5 fastest ways to get where you want to go.

POPULAR DESTINATIONS

- 1 Chinatown
- 2 Financial District
- 3 Mission District
- 4 Embarcadero
- 5 Exploratorium
- 6 Coit Tower
- 7 Lombard Street
- 8 Alamo Square Park
- 9 Haight-Ashbury

DREAMFORCE LOCATIONS

★ MOSCONE CENTER

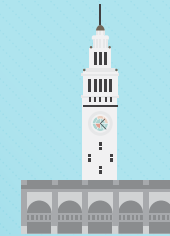
VELOCIFY BOOTH #N1739 & #N1836

- 1 Metreon (App Bash)
- 2 Yerba Buena Gardens
- 3 Marriott Marquis
- 4 The Intercontinental
- 5 Westin Market Street
- 6 The Palace Hotel
- 7 Century Theaters at Westfield
- 8 Hilton Union Square
- 9 Dream Lounge
- 10 Dreamforce Dreamboat
- 11 Pier 70: Dreamforce Gala and UCSF Benefit

ALCATRAZ



FISHERMAN'S WHARF



FERRY BUILDING

OAKLAND AIRPORT



UNION SQUARE

GOLDEN GATE PARK



SAN FRANCISCO AIRPORT



DREAMFORCE DREAMBOAT



11

GETTING TO DREAMFORCE

SAN FRANCISCO AIRPORT (SFO) TO MOSCONE CENTER 12.5 miles

Mode	Price	Wait + Travel = Total Time
Ride Sharing Service	\$25-33	5 + 21 = 26 minutes
Taxi	\$38 + tip	5-10 + 21 = 26-31 minutes
Rental Car	starting at \$30/day*	10-20 + 21 = 31-41 minutes
Airport Shuttle	\$17 + \$10/each add. + tip	15-20 + 21-31 = 36-51 minutes
BART (+ 0.5 walk)	\$8.65	10 + 39 = 49 minutes

OAKLAND AIRPORT (OAK) TO MOSCONE CENTER 18 miles

Mode	Price	Wait + Travel = Total Time
Ride Sharing Service	\$51-65	5 + 26 = 31 minutes
Taxi	\$50 + tip	5-10 + 26 = 31-36 minutes
Rental Car	starting at \$30/day*	10-20 + 26 = 36-46 minutes
Airport Shuttle	\$27 + \$10/each add. + tip	15-20 + 26-41 = 41-61 minutes
BART (+ 0.4 walk)	\$12 (bus + BART)	10 + 48-53 = 58-63 minutes

MOSCONE CENTER TO OTHER DREAMFORCE LOCATIONS

TO UNION SQUARE 0.9 miles

Mode	Price	Wait + Travel = Total Time
Ride Sharing Service	\$5-6	5 + 4 = 9 minutes
Biking	\$7/hr or \$30/day	10 minutes
Taxi	\$6-8 + tip	5-10 + 4 = 9-14 minutes
Walking (-0.3 miles)	Free	14 minutes
Cable Car	\$6	5 + 13 = 18 minutes

While you're there:

Chinatown
Financial District

During Dreamforce, Union Square will become a thriving hub, but remember there's loads to do just around the corner. It's not all business all the time, despite the financial district right down the street.

TO PIER 70 2.6 miles

Mode	Price	Wait + Travel = Total Time
Biking (+1.6 miles)	\$7/hr or \$30/day	19 minutes
Ride Sharing Service	\$9-11	5 + 12 = 17 minutes
Taxi	\$11-12 + tip	5-10 + 12 = 17-22 minutes
Walking (+1.1 miles)	Free	45 minutes
Bus (SF Muni)	\$2	10+ 35 = 45 minutes

While you're there:

Mission District

Visit the Pier 70 for this year's Dreamforce Gala & UCSF Benefit Concert, starring Foo Fighters and Gary Clark Jr. For more great music, art, and dining, head to the Mission District- you won't be disappointed.

This map will help you get from Dreamforce to many of the most popular San Francisco sites, FAST. Then convert more leads and opportunities into revenue.

Learn more at

WWW.VELOCIFY.COM/DREAMFORCE2015

All data is based on average rates and wait times, which may change based on time, traffic, or other factors and are intended as guidelines only.

Ride Sharing Services include Uber, Lyft, Sidecar, etc. *plus gas, parking, and taxes & fees

MOSCONE CENTER TO POPULAR DESTINATIONS

TO FERRY BUILDING 1.4 miles

Mode	Price	Wait + Travel = Total Time
Biking	\$7/hr or \$30/day	11 minutes
Ride Sharing Service	\$6-8	5 + 6 = 11 minutes
Taxi	\$8-10 + tip	5-10 + 6 = 11-16 minutes
Pedicab	\$10/person/mile	15 minutes
Walking	Free	22 minutes

While you're there:

Embarcadero
Exploratorium

Lush with history and breathtaking waterfront views, the San Francisco Ferry Building along the Embarcadero lives up to The City by the Bay's astoundingly accurate nickname.

TO ALCATRAZ 2.5 miles to Pier 33 + Ferry to Alcatraz (~\$30)

Mode	Price	Wait + Travel = Total Time
Ride Sharing Service	\$9-12	5 + 9 = 14 minutes
Biking	\$7/hr or \$30/day	16 minutes
Taxi	\$11-13 + tip	5-10 + 9 = 14-19 minutes
Pedicab	\$10/person/mile	20 minutes
Walking (-0.7 miles)	Free	36 minutes

While you're there:

Coit Tower

Alcatraz Island is an iconic destination rich in history and open for tours. While you're nearby, visit the monumental Coit Tower and take in the surrounding city views, alongside the magnificent art collection.

TO FISHERMAN'S WHARF 2.6 miles

Mode	Price	Wait + Travel = Total Time
Ride Sharing Service	\$8-10	5 + 11 = 16 minutes
Taxi	\$12-13 + tip	5-10 + 11 = 16-21 minutes
Biking (+0.7 miles)	\$7/hr or \$30/day	20 minutes
Pedicab (+0.7 miles)	\$10/person/mile	24 minutes
Bus (SF Muni)	\$2	10-15 + 26 = 36-41 minutes

While you're there:

Lombard Street

Fisherman's Wharf offers a number of restaurants, bars, gift shops, and street stalls featuring fresh seafood. Enjoy a famous clam chowder bread bowl while watching the animated street performers or groves of napping sea lions.

TO GOLDEN GATE PARK 3.8 miles

Mode	Price	Wait + Travel = Total Time
Ride Sharing Service	\$13-18	5 + 11 = 16 minutes
Taxi	\$14-15 + tip	5-10 + 11 = 16-21 minutes
Biking (-0.3 miles)	\$7/hr or \$30/day	30 minutes
Pedicab (-0.3 miles)	\$10/person/mile	36 minutes
Bus (SF Muni)	\$2	10-15 + 36 = 46-51 minutes

While you're there:

Alamo Square Park
Haight-Ashbury

Haight-Ashbury is now bustling and great for people watching. Relax at Alamo Square Park and take in the famous view of the area's Painted Ladies Victorian homes.

Google Maps • Thrifty.com • sanfranciscotours.us
worldtaximeter.com • supershuttle.com • Uber.com
Bart.gov • sfmta.com • sfbay.ca • bikerentalsanfrancisco.com

